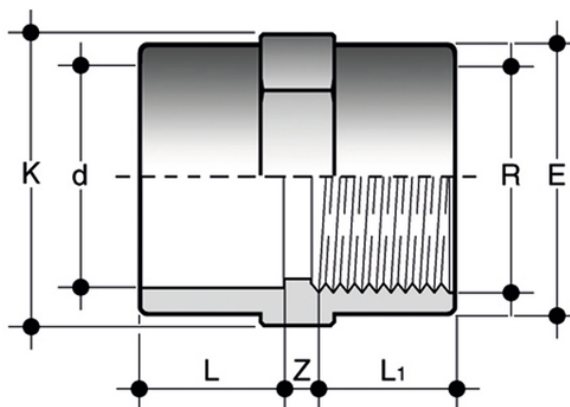
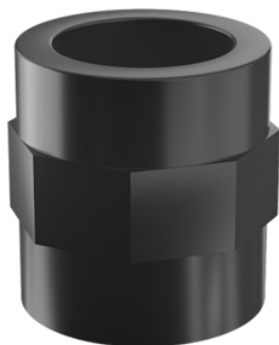


MLFV

Double socket with solvent weld socket d and BSP threaded female end R



Objednáací číslo	Materiál	Kategorie	product.detail.attribute.d x R	PN	E	product.detail.attribute.K	L	L	Z	g	product.detail.at
MLFV012	PVC-U system	Tvarovky	1/2" x 1/2"	15	27	24	16	15	4	15	E
MLFV034	PVC-U system	Tvarovky	3/4" x 3/4"	15	33	29	19,5	16,3	5,2	25	E
MLFV100	PVC-U system	Tvarovky	1" x 1"	15	41	35	22,5	19,1	4,5	45	E
MLFV114	PVC-U system	Tvarovky	1" x 1/4" x 1" x 1/4"	15	50	43	27	21,4	4	65	E
MLFV112	PVC-U system	Tvarovky	1" x 1/2" x 1" x 1/2"	15	61	50	30	21,4	8	100	E
MLFV200	PVC-U system	Tvarovky	2" x 2"	15	76	61	36	25,7	9	160	E
DIFV090075212	PVC-U system	Tvarovky	2" x 1/2" x 2" x 1/2"	12	90	76	44	30,2	17,8	260	E
MLFV300	PVC-U system	Tvarovky	3" x 3"	12	108	108	51	33,3	22,7	449	D