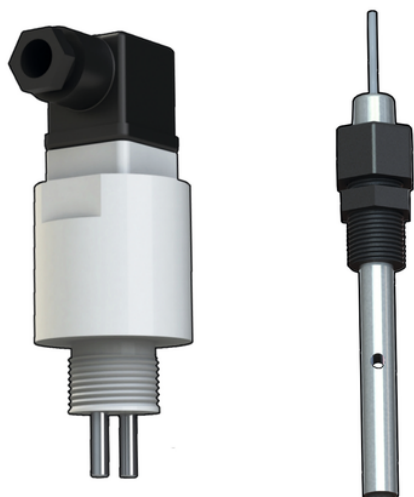


C300

SS Body and Electrodes Conductivity Sensors with Temperature Sensor (Pt1000) included





C300

- APPLICATIONS • Agriculture and fertilizing system • Water treatment • Foods industry • Aquaculture • Ultrapure water application: production and use MAIN FEATURES • Stainless steel measuring surfaces • Considerable ratio performance/price • Temperature sensor included • Wide range of cell constant • Rugged sensor body in PP (C100) • Sensor in SS completely (C300) • C300.001TCCK with certified cell constant